

# Application Success Stories

## ThyssenKrupp Fawer Liaoyang Spring Co., Ltd

Gema Powder Coating System Solution



ThyssenKrupp



SIT «Smart Inline  
Technology»

Increased Productivity

Premium Coating  
Results

# Application Success Stories

## Installation Key Data

**Parts:** Automotive Suspensions

**Object Size:** Length 1700 mm  
Width 900 mm

**Conveyor Speed:** 3-4 m/min

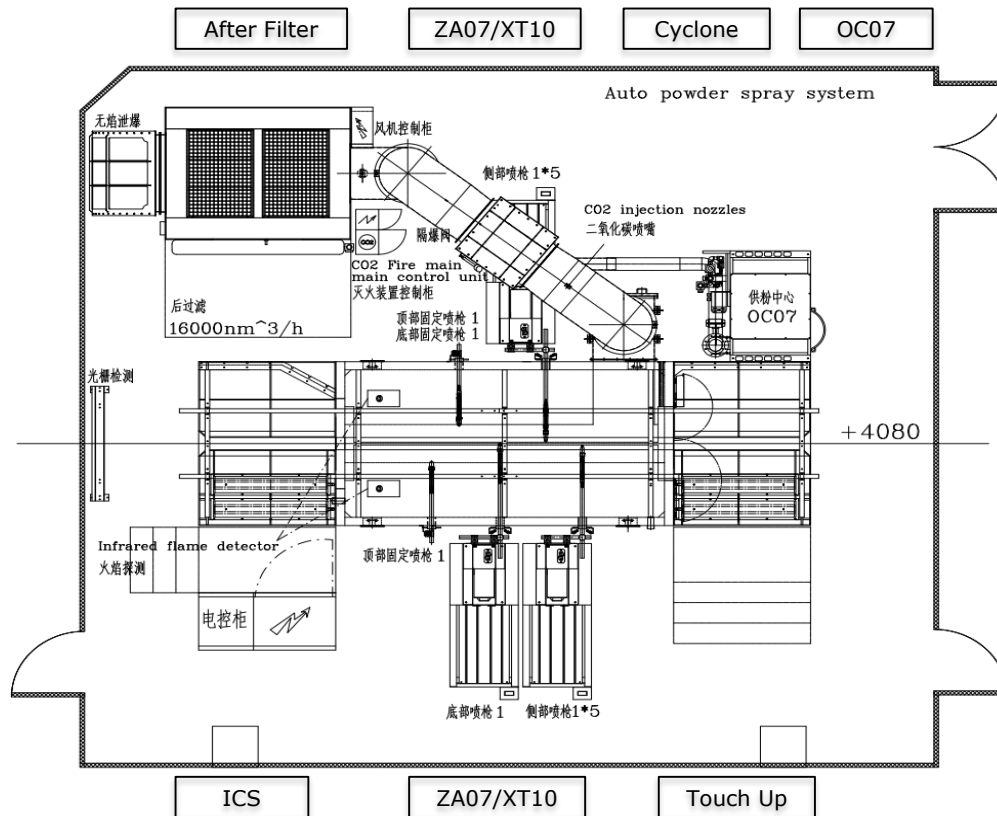
**Scope of delivery:**

1 x MagicCompact® EquiFlow® BA04 16'000 m<sup>3</sup>/h  
1 x OptiFlex® AS08-14P  
14 x OptiGun® GA03-P automatic guns  
1 x OptiCenter® OC07 with 14 x OptiSpray AP01.1  
1 x MagicControl 4.0 (CM40)  
with Interface for superordinate coating program selections  
with light barrier  
3 x Reciprocator ZA07-18 with XT10-14

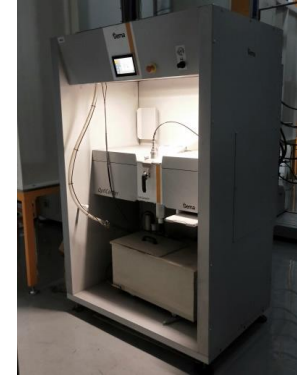


# Application Success Stories

## Layout



# Application Success Stories



## Company Profile

ThyssenKrupp Fawer Liaoyang Spring Co., Ltd., founded in 1995 and located in Liaoyang City, Liaoning Province, is a Sino-European joint venture, called Fawer Automotive Parts Co., Ltd.

With the intensification of national environmental protection requirements and the start of product iteration, the factory stopped producing 380,000 torsion bars per year and replaced and upgraded production equipment to meet the new production target of 4 million automobile stabilizer bars.

## Company Expectation

In view of the growing business volume, the company needed to increase throughput while maintaining its high level of quality.

Flexibility and innovation: these were the motivations behind the buyer's decision to replace the old spray booths, relying on Gema's advice and experience. The new coating system is arranged in a square shape so that the operator could be able to manage the coating and recovery operations more flexible.

## Key to Success

The advantages of the Gema system is consistent coating thickness across batches, a significant reduction in operator rework and clear higher quality final coatings.

- Significant reduction of powder consumption
- Reduction of production waste
- Increase of conveyor speed
- Reduction of manpower on site
- Long lifetime of wear parts